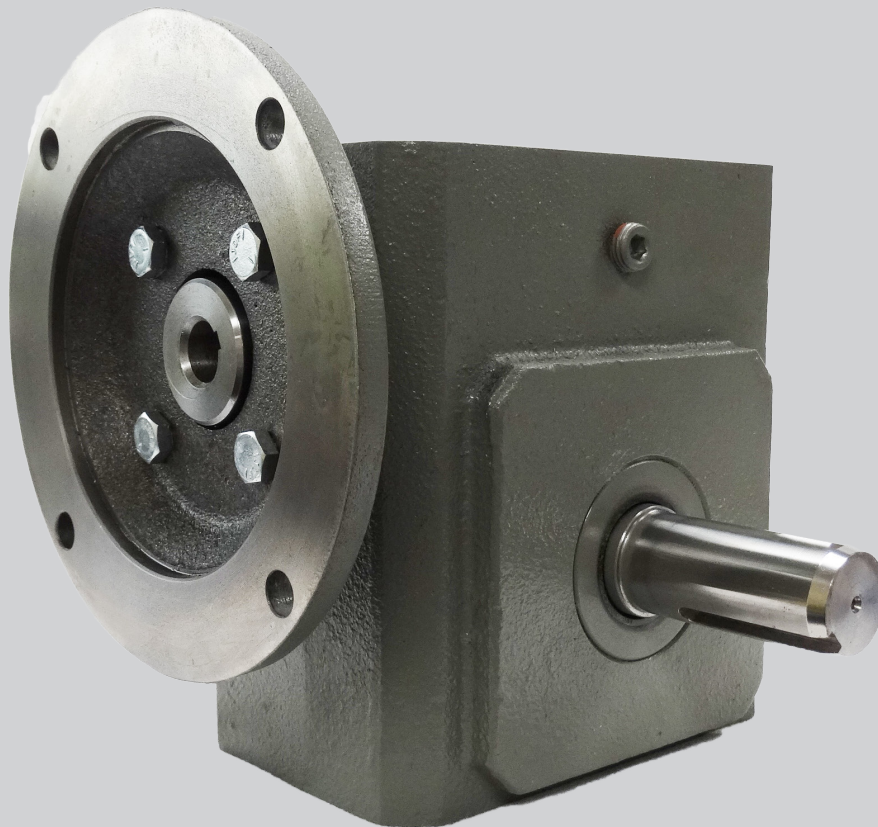
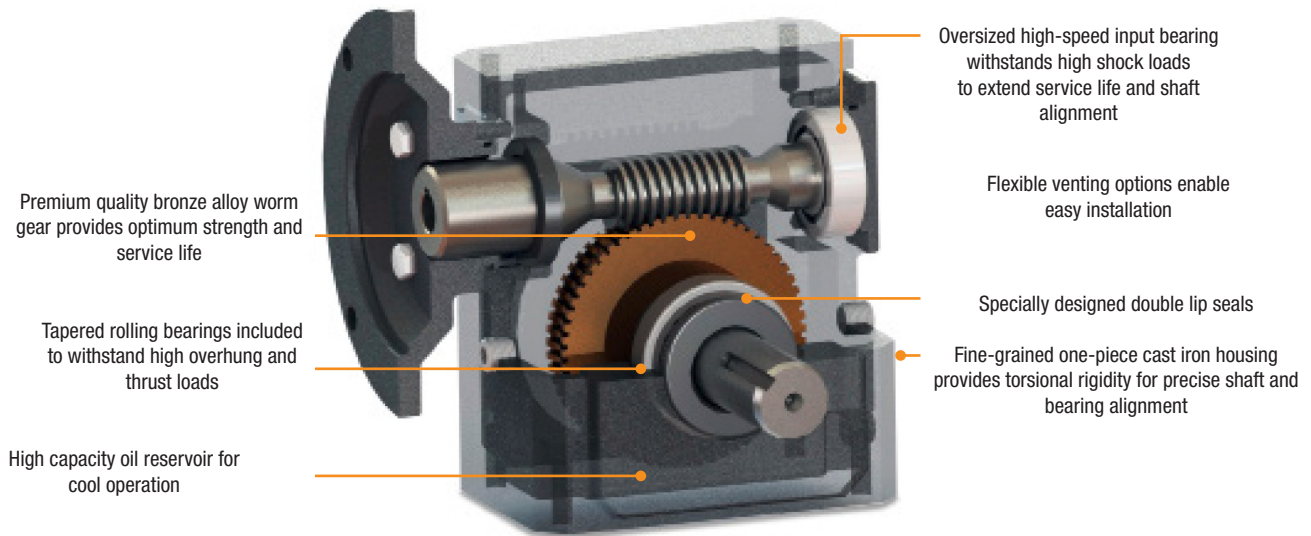


TG-90™ Speed Reducers



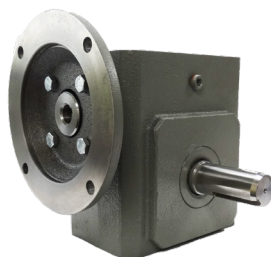
Motors | Automation | Energy | Transmission & Distribution | Coatings

WEG's TG Line of right angle gearmotors has been a leading source to the industry for over 60 years. Designed for reliability and long life, the TG-90 comes in a variety of power ranges and center distances. Our robust design is precision engineered and manufactured to fit a variety of applications. Ideal for use on conveyors, material handling, packaging machinery, lift gates and hoists, and many others, the TG-90 proves to be a versatile choice for your gearing needs.

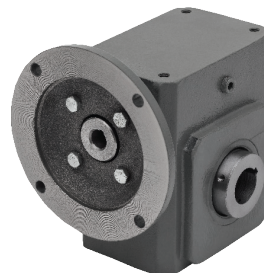


Features:

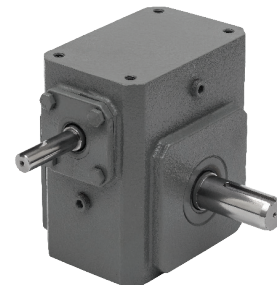
- Grey Iron right angle worm-gear reducer construction
- Forged manganese bronze worm gear for added strength
- Oversized high-speed input bearing to withstand high shock loads
- Tapered roller bearings to withstand high overhung and thrust loads
- Specially designed double lip seals reduce oil leakage
- High capacity oil reservoir for guaranteed cool operation
- Max Output torques from 400 in. lbs. to 1435 in. lbs.
- 1.0 Service Factor
- Available in 56C, 143TC quill or solid shaft input mounting
- Eight gear ratios available from 5:1 to 60:1
- Select from single, double, or hollow output shaft options
- Left, right, or bottom mounting



C-Face Input/Shaft Output



C-Face or Shaft Input/
Hollow Bore Output



Shaft Input/Shaft Output

MODEL ORDERING NOMENCLATURE INFORMATION

STYLE	SIZE	RATIO	ORIENTATION	MOTOR MOUNT	LUBRICATION	VENT
TQ - Quill Input	13 - 1.33" CD	5	L - Left Hand	56 -56C	N - No Oil	N - No Pressure Relief
TS- Shaft Input	15 - 1.54" CD					
	18 - 1.75" CD	10	R - Right Hand	140 - 143-5TC	S - Synthetic	P - Pressure Relief
	21 - 2.06" CD					
	24 -2.37" CD	15	D - Double		L - Lube for Life	
	26 - 26.3" CD					
		20	H - Hollow			
		30				
		40				
		50				
		60				
TQ	21	60	L	56	S	P

Model	Output Shaft Diameter (in)	Max Torque (in-lb)	Single Output Shaft Max. Over-hung Load (lb)	Dual Output Shaft Max. Over-hung Load (lb)	Hollow Output Shaft Max. Over-hung Load (lb)
T13	0.625"	297	425	213	425
T15	0.750"	423	655	328	655
T18	0.875"	571	925	463	925
T21	1.000"	842	1200	600	1200
T24	1.125"	1165	1670	835	1670
T26	1.250"	1474	1665	833	1665

TG-90™ Speed Reducers

	Service Class I Torque Ratings (1.0 Service Factor)
	Service Class II Torque Ratings (≥ 1.4 Service Factor)
	Service Class III Torque Ratings (≥ 2.0 Service Factor)



Nominal Output RPM @ 1750 RPM In	Gear Ratio	Continuous Duty Output Torque (In-Lbs) Based on 1750 RPM Motor									Max Input HP	Max Output Torque Rating In-Lbs	NEMA Motor Mount	Catalog Number	Multi. Symbol		
		0.25	0.33	0.5	0.75	1	1.5	2	3	5							
350	5:1			83	124	166						1.32	218	56C	TQ135L56SP	TG	
				83	124	166							1.32	218	56C		TQ135R56SP
				83	124	166							1.32	218	56C		TQ135D56SP
				83	124	166							1.32	218	56C		TQ135H56SP
					124	166	250						1.89	313	140TC		TQ155L140SP
					124	166	250						1.89	313	140TC		TQ155R140SP
					124	166	250						1.89	313	140TC		TQ155D140SP
					124	166	250						1.89	313	140TC		TQ155H140SP
						167	251	335					2.50	418	140TC		TQ185L140SP
						167	251	335					2.50	418	140TC		TQ185R140SP
						167	251	335					2.50	418	140TC		TQ185D140SP
						167	251	335					2.50	418	140TC		TQ185H140SP
							251	335	502				3.65	611	140TC		TQ215L140SP
							251	335	502				3.65	611	140TC		TQ215R140SP
							251	335	502				3.65	611	140TC		TQ215D140SP
							251	335	502				3.65	611	140TC		TQ215H140SP
								335	502	837			4.89	819	140TC		TQ245L140SP
								335	502	837			4.89	819	140TC		TQ245R140SP
								335	502	837			4.89	819	140TC		TQ245D140SP
								335	502	837			4.89	819	140TC		TQ245H140SP
						335	502	837			5.36	1037	140TC	TQ265L140SP			
						335	502	837			5.36	1037	140TC	TQ265R140SP			
						335	502	837			5.36	1037	140TC	TQ265D140SP			
						335	502	837			5.36	1037	140TC	TQ265H140SP			
175	10:1		105	158	238							0.85	269	56C	TQ1310L56SP	TG	
			105	158	238								0.85	269	56C		TQ1310R56SP
			105	158	238								0.85	269	56C		TQ1310D56SP
			105	158	238								0.85	269	56C		TQ1310H56SP
				160	240	321							1.19	382	140TC		TQ1510L140SP
				160	240	321							1.19	382	140TC		TQ1510R140SP
				160	240	321							1.19	382	140TC		TQ1510D140SP
				160	240	321							1.19	382	140TC		TQ1510H140SP
					243	324	486						1.59	514	140TC		TQ1810L140SP
					243	324	486						1.59	514	140TC		TQ1810R140SP
					243	324	486						1.59	514	140TC		TQ1810D140SP
					243	324	486						1.59	514	140TC		TQ1810H140SP
						324	486	648					2.33	755	140TC		TQ2110L140SP
						324	486	648					2.33	755	140TC		TQ2110R140SP
						324	486	648					2.33	755	140TC		TQ2110D140SP
						324	486	648					2.33	755	140TC		TQ2110H140SP
							492	655	983				3.18	1041	140TC		TQ2410L140SP
							492	655	983				3.18	1041	140TC		TQ2410R140SP
							492	655	983				3.18	1041	140TC		TQ2410D140SP
							492	655	983				3.18	1041	140TC		TQ2410H140SP
					492	655	983				4.00	1311	140TC	TQ2610L140SP			
					492	655	983				4.00	1311	140TC	TQ2610R140SP			
					492	655	983				4.00	1311	140TC	TQ2610D140SP			
					492	655	983				4.00	1311	140TC	TQ2610H140SP			



	Service Class I Torque Ratings (1.0 Service Factor)
	Service Class II Torque Ratings (≥ 1.4 Service Factor)
	Service Class III Torque Ratings (≥ 2.0 Service Factor)

TG-90™ Speed Reducers

Nominal Output RPM @ 1750 RPM In	Gear Ratio	Continuous Duty Output Torque (In-Lbs) Based on 1750 RPM Motor									Max Input HP	Max Output Torque Rating In-Lbs	NEMA Motor Mount	Catalog Number	Multi. Symbol
		0.25	0.33	0.5	0.75	1	1.5	2	3	5					
117	15:1	113	149	226							0.64	288	56C	TQ1315L56SP	TG
		113	149	226							0.64	288	56C	TQ1315R56SP	
		113	149	226							0.64	288	56C	TQ1315D56SP	
		113	149	226							0.64	288	56C	TQ1315H56SP	
			151	229	343						0.90	410	56C	TQ1515L56SP	
			151	229	343						0.90	410	56C	TQ1515R56SP	
			151	229	343						0.90	410	56C	TQ1515D56SP	
			151	229	343						0.90	410	56C	TQ1515H56SP	
				234	351	469					1.17	548	56C	TQ1815L56SP	
				234	351	469					1.17	548	56C	TQ1815R56SP	
				234	351	469					1.17	548	56C	TQ1815D56SP	
				234	351	469					1.17	548	56C	TQ1815H56SP	
					351	469	703				1.73	813	56C	TQ2115L56SP	
					351	469	703				1.73	813	56C	TQ2115R56SP	
					351	469	703				1.73	813	56C	TQ2115D56SP	
					351	469	703				1.73	813	56C	TQ2115H56SP	
						474	711	948			2.37	1123	56C	TQ2415L56SP	
						474	711	948			2.37	1123	56C	TQ2415R56SP	
						474	711	948			2.37	1123	56C	TQ2415D56SP	
						474	711	948			2.37	1123	56C	TQ2415H56SP	
					711	948	1422		2.99	1419	56C	TQ2615L56SP			
					711	948	1422		2.99	1419	56C	TQ2615R56SP			
					711	948	1422		2.99	1419	56C	TQ2615D56SP			
					711	948	1422		2.99	1419	56C	TQ2615H56SP			
88	20:1	145	191	290							0.51	295	56C	TQ1320L56SP	TG
		145	191	290							0.51	295	56C	TQ1320R56SP	
		145	191	290							0.51	295	56C	TQ1320D56SP	
		145	191	290							0.51	295	56C	TQ1320H56SP	
		145	191	290							0.72	420	56C	TQ1520L56SP	
		145	191	290							0.72	420	56C	TQ1520R56SP	
		145	191	290							0.72	420	56C	TQ1520D56SP	
		145	191	290							0.72	420	56C	TQ1520H56SP	
			199	301	451						0.94	566	56C	TQ1820L56SP	
			199	301	451						0.94	566	56C	TQ1820R56SP	
			199	301	451						0.94	566	56C	TQ1820D56SP	
			199	301	451						0.94	566	56C	TQ1820H56SP	
				301	451	602					1.39	835	56C	TQ2120L56SP	
				301	451	602					1.39	835	56C	TQ2120R56SP	
				301	451	602					1.39	835	56C	TQ2120D56SP	
				301	451	602					1.39	835	56C	TQ2120H56SP	
					457	609	913				1.89	1152	56C	TQ2420L56SP	
					457	609	913				1.89	1152	56C	TQ2420R56SP	
					457	609	913				1.89	1152	56C	TQ2420D56SP	
					457	609	913				1.89	1152	56C	TQ2420H56SP	
				609	913	1218			2.40	1461	56C	TQ2620L56SP			
				609	913	1218			2.40	1461	56C	TQ2620R56SP			
				609	913	1218			2.40	1461	56C	TQ2620D56SP			
				609	913	1218			2.40	1461	56C	TQ2620H56SP			

TG-90™ Speed Reducers

	Service Class I Torque Ratings (1.0 Service Factor)
	Service Class II Torque Ratings (≥ 1.4 Service Factor)
	Service Class III Torque Ratings (≥ 2.0 Service Factor)



Nominal Output RPM @ 1750 RPM In	Gear Ratio	Continuous Duty Output Torque (In-Lbs) Based on 1750 RPM Motor									Max Input HP	Max Output Torque Rating In-Lbs	NEMA Motor Mount	Catalog Number	Multi. Symbol
		0.25	0.33	0.5	0.75	1	1.5	2	3	5					
58	30:1	201	265								0.37	297	56C	TQ1330L56SP	TG
		201	265								0.37	297	56C	TQ1330R56SP	
		201	265								0.37	297	56C	TQ1330D56SP	
		201	265								0.37	297	56C	TQ1330H56SP	
		201	265	402							0.53	423	56C	TQ1530L56SP	
		201	265	402							0.53	423	56C	TQ1530R56SP	
		201	265	402							0.53	423	56C	TQ1530D56SP	
		201	265	402							0.53	423	56C	TQ1530H56SP	
		212	280	424							0.67	571	56C	TQ1830L56SP	
		212	280	424							0.67	571	56C	TQ1830R56SP	
		212	280	424							0.67	571	56C	TQ1830D56SP	
		212	280	424							0.67	571	56C	TQ1830H56SP	
				424	636	848					0.99	842	56C	TQ2130L56SP	
				424	636	848					0.99	842	56C	TQ2130R56SP	
				424	636	848					0.99	842	56C	TQ2130D56SP	
				424	636	848					0.99	842	56C	TQ2130H56SP	
				429	644	858					1.36	1165	56C	TQ2430L56SP	
				429	644	858					1.36	1165	56C	TQ2430R56SP	
				429	644	858					1.36	1165	56C	TQ2430D56SP	
				429	644	858					1.36	1165	56C	TQ2430H56SP	
			644	858	1288				1.72	1474	56C	TQ2630L56SP			
			644	858	1288				1.72	1474	56C	TQ2630R56SP			
			644	858	1288				1.72	1474	56C	TQ2630D56SP			
			644	858	1288				1.72	1474	56C	TQ2630H56SP			
44	40:1	247									0.30	292	56C	TQ1340L56SP	TG
		247									0.30	292	56C	TQ1340R56SP	
		247									0.30	292	56C	TQ1340D56SP	
		247									0.30	292	56C	TQ1340H56SP	
		247	326								0.42	419	56C	TQ1540L56SP	
		247	326								0.42	419	56C	TQ1540R56SP	
		247	326								0.42	419	56C	TQ1540D56SP	
		247	326								0.42	419	56C	TQ1540H56SP	
		261	345	523							0.54	565	56C	TQ1840L56SP	
		261	345	523							0.54	565	56C	TQ1840R56SP	
		261	345	523							0.54	565	56C	TQ1840D56SP	
		261	345	523							0.54	565	56C	TQ1840H56SP	
			345	523	784						0.80	833	56C	TQ2140L56SP	
			345	523	784						0.80	833	56C	TQ2140R56SP	
			345	523	784						0.80	833	56C	TQ2140D56SP	
			345	523	784						0.80	833	56C	TQ2140H56SP	
				530	795	1060					1.09	1154	56C	TQ2440L56SP	
				530	795	1060					1.09	1154	56C	TQ2440R56SP	
				530	795	1060					1.09	1154	56C	TQ2440D56SP	
				530	795	1060					1.09	1154	56C	TQ2440H56SP	
			795	1060	1590				1.38	1460	56C	TQ2640L56SP			
			795	1060	1590				1.38	1460	56C	TQ2640R56SP			
			795	1060	1590				1.38	1460	56C	TQ2640D56SP			
			795	1060	1590				1.38	1460	56C	TQ2640H56SP			



	Service Class I Torque Ratings (1.0 Service Factor)
	Service Class II Torque Ratings (≥ 1.4 Service Factor)
	Service Class III Torque Ratings (≥ 2.0 Service Factor)

TG-90™ Speed Reducers

Nominal Output RPM @ 1750 RPM In	Gear Ratio	Continuous Duty Output Torque (In-Lbs) Based on 1750 RPM Motor									Max Input HP	Max Output Torque Rating In-Lbs	NEMA Motor Mount	Catalog Number	Multi. Symbol
		0.25	0.33	0.5	0.75	1	1.5	2	3	5					
35	50:1										0.24	281	56C	TQ1350L56SP	TG
											0.24	281	56C	TQ1350R56SP	
											0.24	281	56C	TQ1350D56SP	
											0.24	281	56C	TQ1350H56SP	
			380								0.35	403	56C	TQ1550L56SP	
			380								0.35	403	56C	TQ1550R56SP	
			380								0.35	403	56C	TQ1550D56SP	
			380								0.35	403	56C	TQ1550H56SP	
			404								0.44	544	56C	TQ1850L56SP	
			404								0.44	544	56C	TQ1850R56SP	
			404								0.44	544	56C	TQ1850D56SP	
			404								0.44	544	56C	TQ1850H56SP	
			410	621	932						0.65	803	56C	TQ2150L56SP	
			410	621	932						0.65	803	56C	TQ2150R56SP	
			410	621	932						0.65	803	56C	TQ2150D56SP	
			410	621	932						0.65	803	56C	TQ2150H56SP	
			416	630	945						0.88	1114	56C	TQ2450L56SP	
			416	630	945						0.88	1114	56C	TQ2450R56SP	
			416	630	945						0.88	1114	56C	TQ2450D56SP	
			416	630	945						0.88	1114	56C	TQ2450H56SP	
				630	945	1261					1.12	1410	56C	TQ2650L56SP	
				630	945	1261					1.12	1410	56C	TQ2650R56SP	
				630	945	1261					1.12	1410	56C	TQ2650D56SP	
				630	945	1261					1.12	1410	56C	TQ2650H56SP	
29	60:1									0.20	267	56C	TQ1360L56SP	TG	
										0.20	267	56C	TQ1360R56SP		
											0.20	267	56C		TQ1360D56SP
											0.20	267	56C		TQ1360H56SP
		326									0.29	383	56C		TQ1560L56SP
		326									0.29	383	56C		TQ1560R56SP
		326									0.29	383	56C		TQ1560D56SP
		326									0.29	383	56C		TQ1560H56SP
		348	459								0.37	517	56C		TQ1860L56SP
		348	459								0.37	517	56C		TQ1860R56SP
		348	459								0.37	517	56C		TQ1860D56SP
		348	459								0.37	517	56C		TQ1860H56SP
		353	466	706							0.54	762	56C		TQ2160L56SP
		353	466	706							0.54	762	56C		TQ2160R56SP
		353	466	706							0.54	762	56C		TQ2160D56SP
		353	466	706							0.54	762	56C		TQ2160H56SP
			473	717	1076						0.74	1057	56C		TQ2460L56SP
			473	717	1076						0.74	1057	56C		TQ2460R56SP
			473	717	1076						0.74	1057	56C		TQ2460D56SP
			473	717	1076						0.74	1057	56C		TQ2460H56SP
				717	1076	1434					0.93	1338	56C		TQ2660L56SP
				717	1076	1434					0.93	1338	56C		TQ2660R56SP
				717	1076	1434					0.93	1338	56C		TQ2660D56SP
				717	1076	1434					0.93	1338	56C		TQ2660H56SP

TG-90™ Speed Reducers

	Service Class I Torque Ratings (1.0 Service Factor)
	Service Class II Torque Ratings (≥ 1.4 Service Factor)
	Service Class III Torque Ratings (≥ 2.0 Service Factor)



Nominal Output RPM @ 1750 RPM In	Gear Ratio	Continuous Duty Output Torque (In-Lbs) Based on Motor HP at 1750 RPM								Max Input HP	Max Output Torque Rating In-Lbs	Catalog Number	Multi-Symbol	
		0.25	0.33	0.5	0.75	1	1.5	2	3					5
350	5:1			83	124	166					1.32	218	TS135LSP	TG
				83	124	166					1.32	218	TS135RSP	
				83	124	166					1.32	218	TS135DSP	
				83	124	166					1.32	218	TS135HSP	
					124	166	250				1.89	313	TS155LSP	
					124	166	250				1.89	313	TS155RSP	
					124	166	250				1.89	313	TS155DSP	
					124	166	250				1.89	313	TS155HSP	
						167	251	335			2.50	418	TS185LSP	
						167	251	335			2.50	418	TS185RSP	
						167	251	335			2.50	418	TS185DSP	
						167	251	335			2.50	418	TS185HSP	
							251	335	502		3.65	611	TS215LSP	
							251	335	502		3.65	611	TS215RSP	
							251	335	502		3.65	611	TS215DSP	
							251	335	502		3.65	611	TS215HSP	
								335	502	837	4.89	819	TS245LSP	
								335	502	837	4.89	819	TS245RSP	
								335	502	837	4.89	819	TS245DSP	
								335	502	837	4.89	819	TS245HSP	
								335	502	837	5.36	1037	TS265LSP	
								335	502	837	5.36	1037	TS265RSP	
								335	502	837	5.36	1037	TS265DSP	
								335	502	837	5.36	1037	TS265HSP	
175	10:1		105	158	238						0.85	269	TS1310LSP	TG
			105	158	238						0.85	269	TS1310RSP	
			105	158	238						0.85	269	TS1310DSP	
			105	158	238						0.85	269	TS1310HSP	
				160	240	321					1.19	382	TS1510LSP	
				160	240	321					1.19	382	TS1510RSP	
				160	240	321					1.19	382	TS1510DSP	
				160	240	321					1.19	382	TS1510HSP	
					243	324	486				1.59	514	TS1810LSP	
					243	324	486				1.59	514	TS1810RSP	
					243	324	486				1.59	514	TS1810DSP	
					243	324	486				1.59	514	TS1810HSP	
						324	486	648			2.33	755	TS2110LSP	
						324	486	648			2.33	755	TS2110RSP	
						324	486	648			2.33	755	TS2110DSP	
						324	486	648			2.33	755	TS2110HSP	
							492	655	983		3.18	1041	TS2410LSP	
							492	655	983		3.18	1041	TS2410RSP	
							492	655	983		3.18	1041	TS2410DSP	
							492	655	983		3.18	1041	TS2410HSP	
							492	655	983		4.00	1311	TS2610LSP	
							492	655	983		4.00	1311	TS2610RSP	
							492	655	983		4.00	1311	TS2610DSP	
							492	655	983		4.00	1311	TS2610HSP	



	Service Class I Torque Ratings (1.0 Service Factor)
	Service Class II Torque Ratings (≥ 1.4 Service Factor)
	Service Class III Torque Ratings (≥ 2.0 Service Factor)

TG-90™ Speed Reducers

Nominal Output RPM @ 1750 RPM In	Gear Ratio	Continuous Duty Output Torque (In-Lbs) Based on Motor HP at 1750 RPM								Max Input HP	Max Output Torque Rating In-Lbs	Catalog Number	Multi. Symbol	
		0.25	0.33	0.5	0.75	1	1.5	2	3					5
117	15:1	113	149	226							0.64	288	TS1315LSP	TG
		113	149	226							0.64	288	TS1315RSP	
		113	149	226							0.64	288	TS1315DSP	
		113	149	226							0.64	288	TS1315HSP	
			151	229	343						0.90	410	TS1515LSP	
			151	229	343						0.90	410	TS1515RSP	
			151	229	343						0.90	410	TS1515DSP	
			151	229	343						0.90	410	TS1515HSP	
				234	351	469					1.17	548	TS1815LSP	
				234	351	469					1.17	548	TS1815RSP	
				234	351	469					1.17	548	TS1815DSP	
				234	351	469					1.17	548	TS1815HSP	
					351	469	703				1.73	813	TS2115LSP	
					351	469	703				1.73	813	TS2115RSP	
					351	469	703				1.73	813	TS2115DSP	
					351	469	703				1.73	813	TS2115HSP	
						474	711	948			2.37	1123	TS2415LSP	
						474	711	948			2.37	1123	TS2415RSP	
						474	711	948			2.37	1123	TS2415DSP	
						474	711	948			2.37	1123	TS2415HSP	
					711	948	1422		2.99	1419	TS2615LSP			
					711	948	1422		2.99	1419	TS2615RSP			
					711	948	1422		2.99	1419	TS2615DSP			
					711	948	1422		2.99	1419	TS2615HSP			
88	20:1	145	191	290							0.51	295	TS1320LSP	TG
		145	191	290							0.51	295	TS1320RSP	
		145	191	290							0.51	295	TS1320DSP	
		145	191	290							0.51	295	TS1320HSP	
		145	191	290							0.72	420	TS1520LSP	
		145	191	290							0.72	420	TS1520RSP	
		145	191	290							0.72	420	TS1520DSP	
		145	191	290							0.72	420	TS1520HSP	
			199	301	451						0.94	566	TS1820LSP	
			199	301	451						0.94	566	TS1820RSP	
			199	301	451						0.94	566	TS1820DSP	
			199	301	451						0.94	566	TS1820HSP	
				301	451	602					1.39	835	TS2120LSP	
				301	451	602					1.39	835	TS2120RSP	
				301	451	602					1.39	835	TS2120DSP	
				301	451	602					1.39	835	TS2120HSP	
					457	609	913				1.89	1152	TS2420LSP	
					457	609	913				1.89	1152	TS2420RSP	
					457	609	913				1.89	1152	TS2420DSP	
					457	609	913				1.89	1152	TS2420HSP	
				609	913	1218			2.40	1461	TS2620LSP			
				609	913	1218			2.40	1461	TS2620RSP			
				609	913	1218			2.40	1461	TS2620DSP			
				609	913	1218			2.40	1461	TS2620HSP			

TG-90™ Speed Reducers

	Service Class I Torque Ratings (1.0 Service Factor)
	Service Class II Torque Ratings (≥ 1.4 Service Factor)
	Service Class III Torque Ratings (≥ 2.0 Service Factor)



Nominal Output RPM @ 1750 RPM In	Gear Ratio	Continuous Duty Output Torque (In-Lbs) Based on Motor HP at 1750 RPM									Max Input HP	Max Output Torque Rating In-Lbs	Catalog Number	Multi. Symbol	
		0.25	0.33	0.5	0.75	1	1.5	2	3	5					
58	30:1	201	265									0.37	297	TS1330LSP	TG
		201	265									0.37	297	TS1330RSP	
		201	265									0.37	297	TS1330DSP	
		201	265									0.37	297	TS1330HSP	
		201	265	402								0.53	423	TS1530LSP	
		201	265	402								0.53	423	TS1530RSP	
		201	265	402								0.53	423	TS1530DSP	
		201	265	402								0.53	423	TS1530HSP	
		212	280	424								0.67	571	TS1830LSP	
		212	280	424								0.67	571	TS1830RSP	
		212	280	424								0.67	571	TS1830DSP	
		212	280	424								0.67	571	TS1830HSP	
				424	636	848						0.99	842	TS2130LSP	
				424	636	848						0.99	842	TS2130RSP	
				424	636	848						0.99	842	TS2130DSP	
				424	636	848						0.99	842	TS2130HSP	
				429	644	858						1.36	1165	TS2430LSP	
				429	644	858						1.36	1165	TS2430RSP	
				429	644	858						1.36	1165	TS2430DSP	
				429	644	858						1.36	1165	TS2430HSP	
			644	858	1288					1.72	1474	TS2630LSP			
			644	858	1288					1.72	1474	TS2630RSP			
			644	858	1288					1.72	1474	TS2630DSP			
			644	858	1288					1.72	1474	TS2630HSP			
44	40:1	247									0.30	292	TS1340LSP	TG	
		247									0.30	292	TS1340RSP		
		247									0.30	292	TS1340DSP		
		247									0.30	292	TS1340HSP		
		247	326								0.42	419	TS1540LSP		
		247	326								0.42	419	TS1540RSP		
		247	326								0.42	419	TS1540DSP		
		247	326								0.42	419	TS1540HSP		
		261	345	523							0.54	565	TS1840LSP		
		261	345	523							0.54	565	TS1840RSP		
		261	345	523							0.54	565	TS1840DSP		
		261	345	523							0.54	565	TS1840HSP		
			345	523	784						0.80	833	TS2140LSP		
			345	523	784						0.80	833	TS2140RSP		
			345	523	784						0.80	833	TS2140DSP		
			345	523	784						0.80	833	TS2140HSP		
				530	795	1060					1.09	1154	TS2440LSP		
				530	795	1060					1.09	1154	TS2440RSP		
				530	795	1060					1.09	1154	TS2440DSP		
				530	795	1060					1.09	1154	TS2440HSP		
			795	1060	1590				1.38	1460	TS2640LSP				
			795	1060	1590				1.38	1460	TS2640RSP				
			795	1060	1590				1.38	1460	TS2640DSP				
			795	1060	1590				1.38	1460	TS2640HSP				

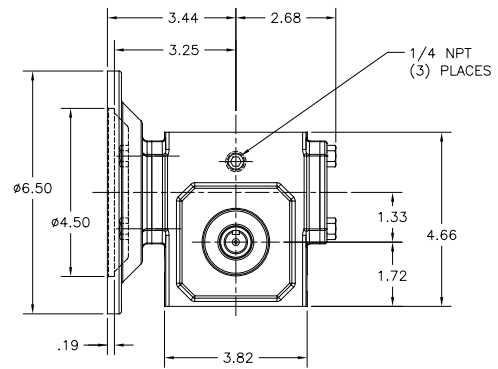
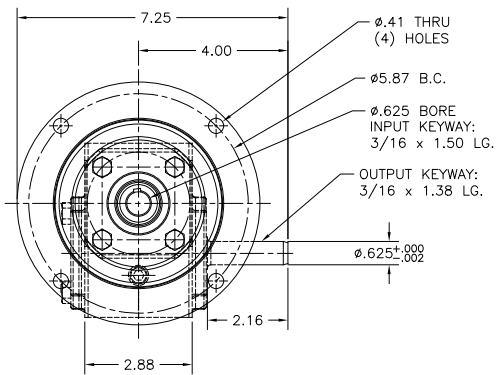
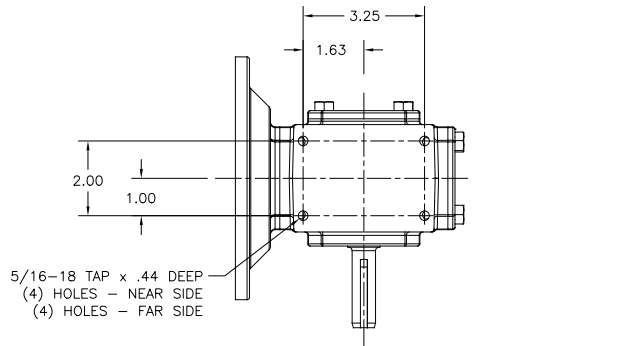


Service Class I Torque Ratings (1.0 Service Factor)
 Service Class II Torque Ratings (≥ 1.4 Service Factor)
 Service Class III Torque Ratings (≥ 2.0 Service Factor)

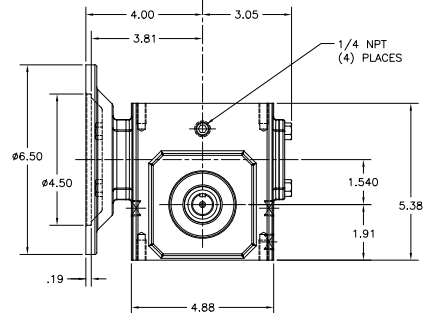
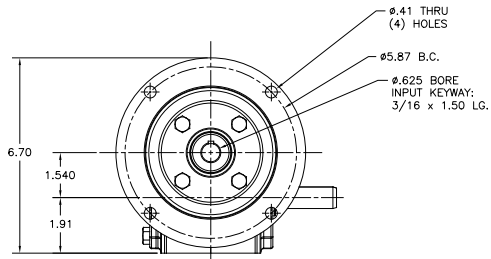
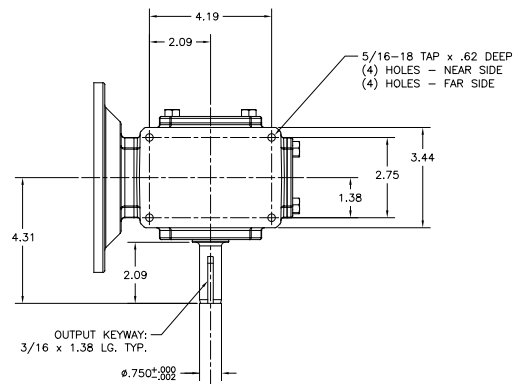
TG-90™ Speed Reducers

Nominal Output RPM @ 1750 RPM In	Gear Ratio	Continuous Duty Output Torque (In-Lbs) Based on Motor HP at 1750 RPM								Max Input HP	Max Output Torque Rating In-Lbs	Catalog Number	Multi-Symbol	
		0.25	0.33	0.5	0.75	1	1.5	2	3					5
35	50:1	288									0.24	281	TS1350LSP	TG
		288									0.24	281	TS1350RSP	
		288									0.24	281	TS1350DSP	
		288									0.24	281	TS1350HSP	
		288	380								0.35	403	TS1550LSP	
		288	380								0.35	403	TS1550RSP	
		288	380								0.35	403	TS1550DSP	
		288	380								0.35	403	TS1550HSP	
		306	404								0.44	544	TS1850LSP	
		306	404								0.44	544	TS1850RSP	
		306	404								0.44	544	TS1850DSP	
		306	404								0.44	544	TS1850HSP	
			410	621	932						0.65	803	TS2150LSP	
			410	621	932						0.65	803	TS2150RSP	
			410	621	932						0.65	803	TS2150DSP	
			410	621	932						0.65	803	TS2150HSP	
			416	630	945						0.88	1114	TS2450LSP	
			416	630	945						0.88	1114	TS2450RSP	
			416	630	945						0.88	1114	TS2450DSP	
			416	630	945						0.88	1114	TS2450HSP	
		630	945	1261					1.12	1410	TS2650LSP			
		630	945	1261					1.12	1410	TS2650RSP			
		630	945	1261					1.12	1410	TS2650DSP			
		630	945	1261					1.12	1410	TS2650HSP			
29	60:1									0.20	267	TS1360LSP	TG	
											0.20	267		TS1360RSP
											0.20	267		TS1360DSP
											0.20	267		TS1360HSP
		326									0.29	383		TS1560LSP
		326									0.29	383		TS1560RSP
		326									0.29	383		TS1560DSP
		326									0.29	383		TS1560HSP
		348	459								0.37	517		TS1860LSP
		348	459								0.37	517		TS1860RSP
		348	459								0.37	517		TS1860DSP
		348	459								0.37	517		TS1860HSP
		353	466	706							0.54	762		TS2160LSP
		353	466	706							0.54	762		TS2160RSP
		353	466	706							0.54	762		TS2160DSP
		353	466	706							0.54	762		TS2160HSP
			473	717	1076						0.74	1057		TS2460LSP
			473	717	1076						0.74	1057		TS2460RSP
			473	717	1076						0.74	1057		TS2460DSP
			473	717	1076						0.74	1057		TS2460HSP
		717	1076	1434					0.93	1338	TS2660LSP			
		717	1076	1434					0.93	1338	TS2660RSP			
		717	1076	1434					0.93	1338	TS2660DSP			
		717	1076	1434					0.93	1338	TS2660HSP			

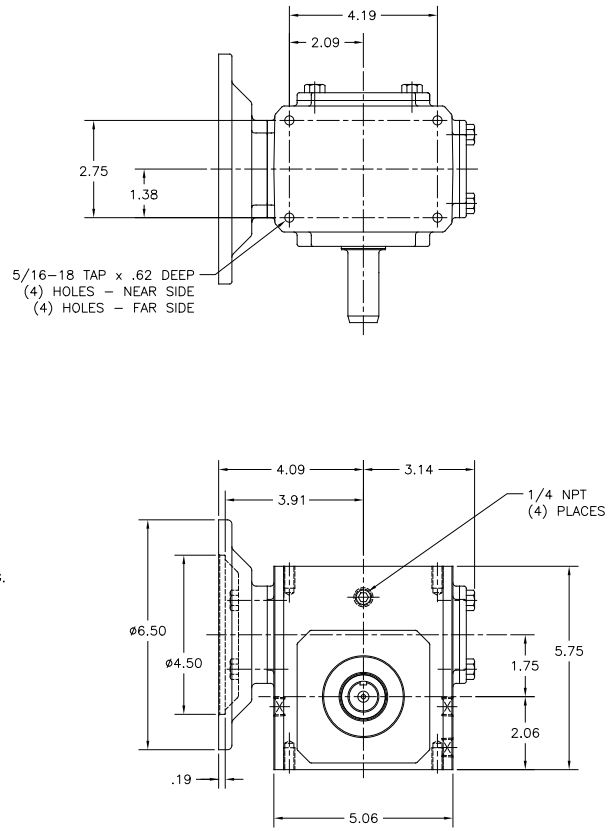
TQ13 Dimensions



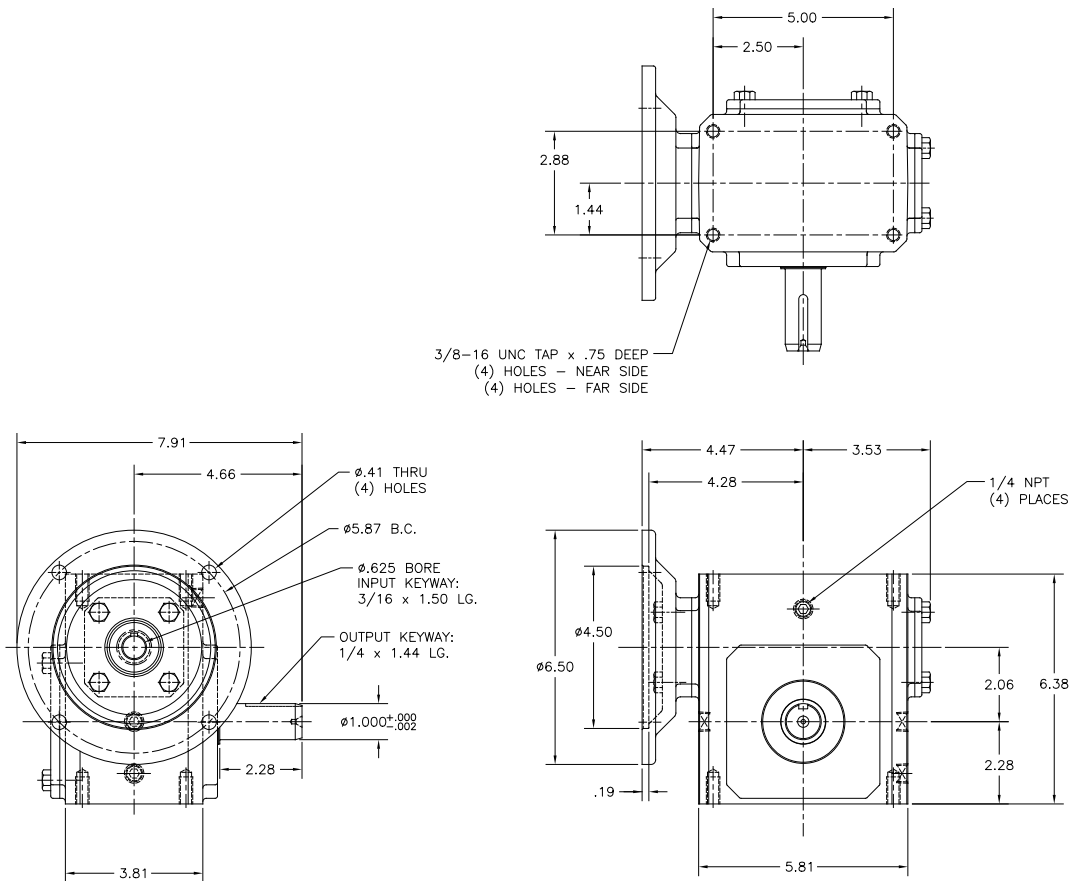
TQ15 Dimensions



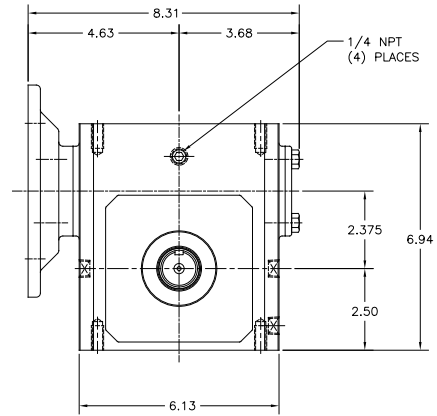
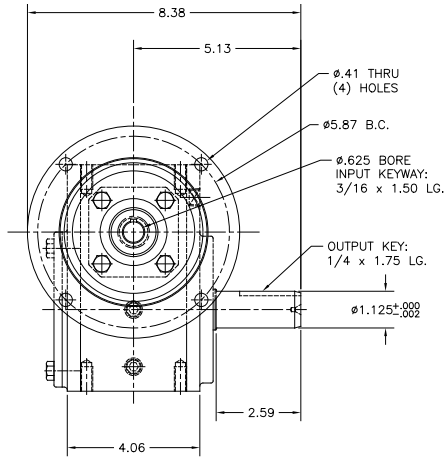
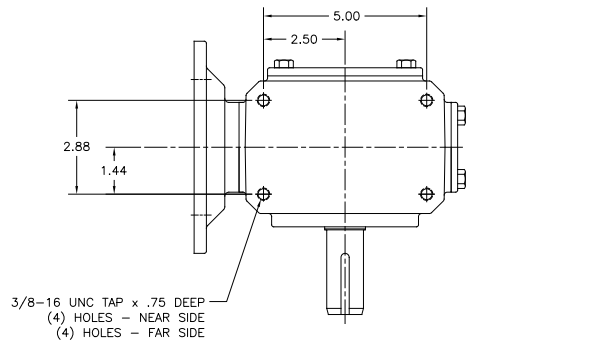
TQ18 Dimensions



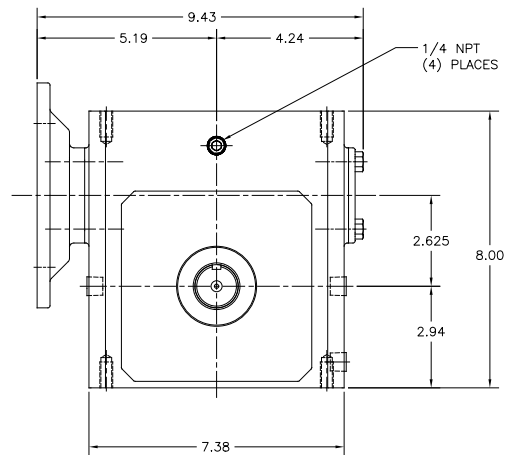
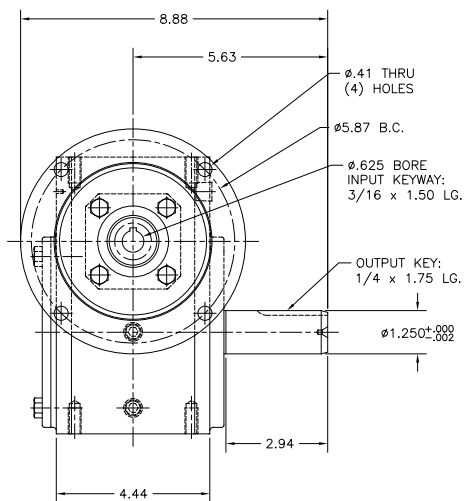
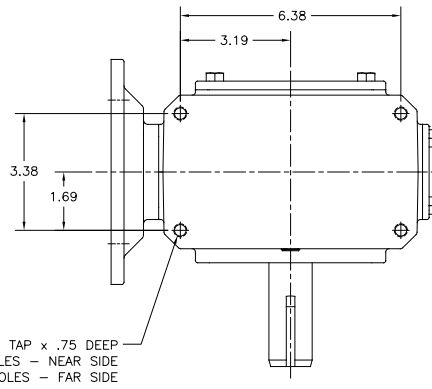
TQ21 Dimensions



TQ24 Dimensions



TQ26 Dimensions





WEG Electric Corp. offers the following products, and more! With a full range of IEC/NEMA Global Certifications and a full line of products, WEG can supply the right solution for your needs anywhere in the world. To learn more about WEG's products and solutions or to locate a Distributor near you, please call **1-800-ASK-4WEG** or visit **www.weg.net**.

**Low Voltage Motors,
Single and 3-Phase, 1/8 – 700HP**

- General Purpose Motors
- Explosion Proof Motors
- Crusher Duty Motors
- IEC Tru-Metric Motors
- Pump Motors including JP/JM
- P-Base Pump Motors
- Oil Well Pumping Motors
- Pool & Spa Motors
- Brake Motors
- Compressor Duty Motors
- Farm Duty Motors
- Poultry Fan Motors
- Auger Drive Motors
- IEEE 841 Motors
- Stainless Steel Wash Down Motors
- Saw Arbor Motors
- Cooling Tower Motors
- Commercial HVAC Motors
- Pad Mounted Motors
- Vector Duty Motors

Large Electric Motors

- Low Voltage 3-phase motors up to 2,500HP
- Motors up to 70,000HP and 13,200V
- Wound Rotor Systems (including starters) up to 70,000HP and 13,200V
- Synchronous Motors up to 70,000HP and 13,200V
- Explosion proof motors (Ex-d) up to 1,500kW and 11kV
- Ex-n, Ex-e, Ex-p motors

Variable Frequency Drives

- Low Voltage 1/4 to 2500HP, 230V – 480V
- Medium Voltage 500-8000HP
- Multi-pump systems
- NEMA 4X
- Dynamic braking resistors
- Line and load reactors
- Plug and play technology
- Network communications: Profibus-DP, DeviceNet, Modbus-RTU
- PLC functions integrated
- Complete line of options and accessories

Soft Starters

- 3-1500HP
- Oriented start-up
- Built-in bypass contactor
- Universal source voltage (230-575V, 50/60Hz)
- Network communications: Profibus-DP, DeviceNet, Modbus-RTU
- Complete Line of options and accessories
- MV Soft-starter 3.3kV, 4.16kV: up to 3500HP, Withdrawable Power Stacks, & 8x PT100 Temperature monitoring

Controls

- Mini – Contactors
- IEC Contactors
- Thermal Overload Relays
- Manual Motor Protectors
- Molded Case Circuit Breakers
- Smart Relays
- Enclosed Starters: combination & non-combination,
- Pushbuttons & Pilot Lights
- Timing & Motor Protection Relays
- Terminal Blocks

Custom Panels

- Custom configured to your specification.
- NEMA 1, 12, 3R, 4 and 4X cabinets
- Quick delivery of preconfigured drives and soft starters
- UL 508 certified
- Low Voltage (230-460)
- Made in the U.S.A.

Generators

- Brushless Synchronous Generators for diesel gen-sets up to 4,200kVA
- Hydro-generators up to 25,000kVA
- Turbo-generators up to 62,500kVA

Power Transformers

- Built and engineered in North America
- Voltages < 500kV
- Ratings 5-300MVA
- Station class, oil filled, round core, copper windings
- Special configurations and designs available!
- Ask your WEG Sales Representative for details.
- Designed, built, and engineered to ANSI standards.

Custom Solution Package Sales

- WEG can package any of its products for ease of sale! Enjoy a single point of contact for the entire package of products and assistance from quote through after-sales support. Ask your WEG Sales Representative for details.



WEG Electric Corp.
6655 Sugarloaf Parkway
Duluth, GA 30097
Phone: 1-800-ASK-4WEG
web: www.weg.net

